

Summary

The St Stephens Place development will deliver a much needed new multiplex cinema, together with a hotel and restaurants on one of Trowbridge's most important regeneration sites.

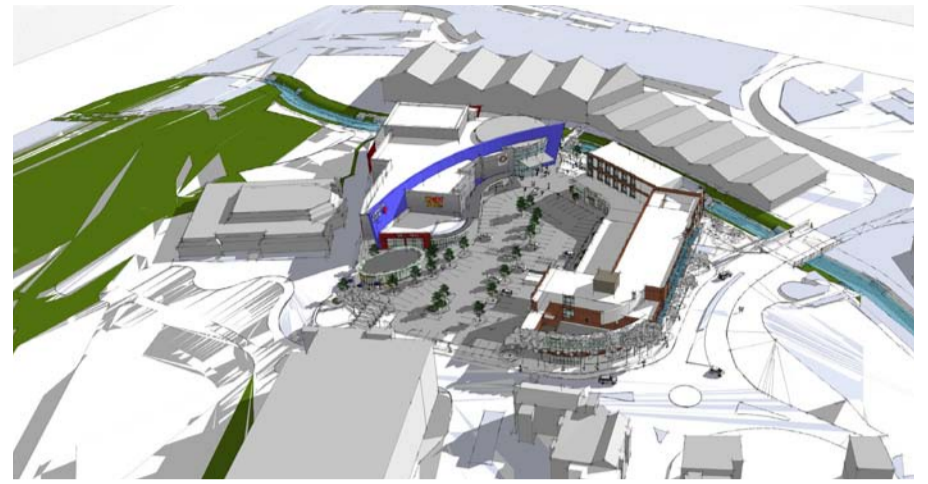
The development will happen as the site is owned by Legal & General, the second largest owner of Leisure Parks in the UK. The proposals are fully funded and deliverable.

St Stephens Place will become the focus for evening leisure activities with the cinema, hotel and restaurants attracting people to the town centre without harming existing shops – and without the need for major new retail development to facilitate the scheme.

The scheme will provide a new high quality landscape corridor along the River Biss, providing public spaces linking with the Park and acting as a catalyst for further regeneration including the Peter Black site.

The leisure focussed development proposals are in line with national and Wiltshire Council planning policies for the St Stephens Place site, and subject to planning approval will be quickly developed and opened by Autumn 2013.

Legal & General now intend to consult widely and hold a Public Exhibition on the proposals, and submit a Full Planning Application within the next 2 months.



Illustrative Scheme views and images



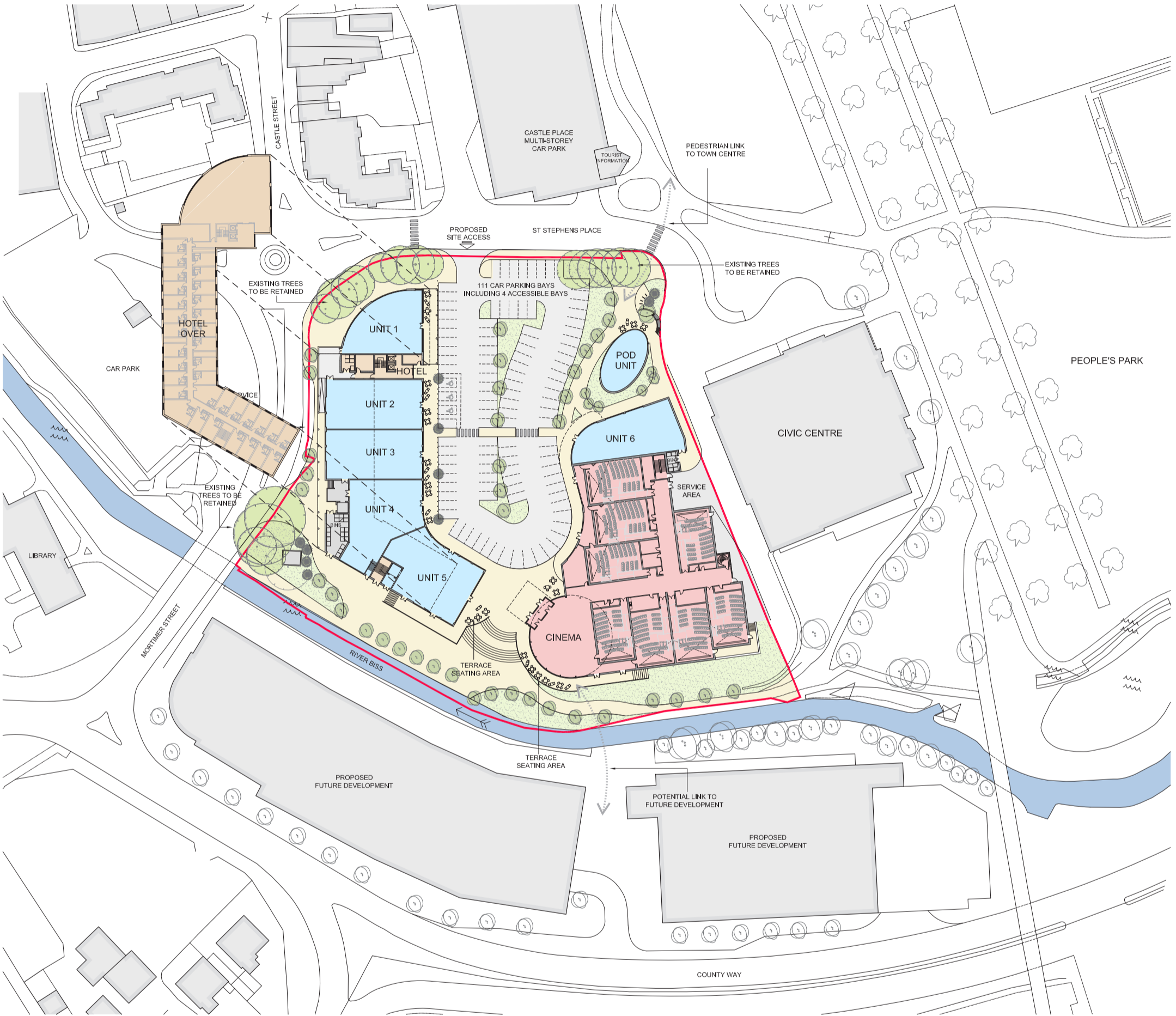
Illustrative Scheme views and images

St Stephens Place, Trowbridge

September 2011



The Proposed Scheme



Illustrative Scheme views and images

St Stephens Place, Trowbridge September 2011